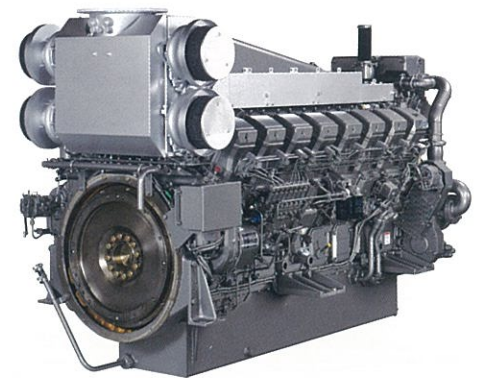


# Propulsion

Model		S16R-MPTK	S16R-T2MPTK
Max. output	B (LD)	1610 kW / 2158 HP / 1800 min <sup>-1</sup>	1610 kW / 2158 HP / 1800 min <sup>-1</sup>
	C (MD)	1380 kW / 1850 HP / 1650 min <sup>-1</sup>	1380 kW / 1850 HP / 1650 min <sup>-1</sup>
	D (HD)	1250 kW / 1676 HP / 1600 min <sup>-1</sup>	1250 kW / 1676 HP / 1600 min <sup>-1</sup>
EIAPP		NONE & IMO1	IMO2
No. of cylinder		16	16
Piston bore	mm	170	170
Piston stroke	mm	180	180
Total piston displacement	liter	65.37	65.37
Flywheel	SAE	21 inch	21 inch
Flywheel housing	SAE	No.00	No.00
Fuel injection pump		Original PS	Original PS
Governer type		Hydraulic	Hydraulic
Capacity of starting motor	pc-kW	2-7.5	2-7.5
Recommended battery size	AH	400	400
Lub. oil capacity (Oil pan)	liter	290	290
Fresh water capacity (Engine)	liter	280	280
Dimensions (L x W x H)	mm	3086 x 1622 x 1960	3086 x 1622 x 1960
Dry weight	kg	7,000	7,000

Model		S16R2-T2MPTK
Max. output	B (LD)	1885 kW / 2526 HP / 1500 min <sup>-1</sup>
	C (MD)	1600 kW / 2144 HP / 1400 min <sup>-1</sup>
	D (HD)	1450 kW / 1943 HP / 1350 min <sup>-1</sup>
EIAPP		IMO2
No. of cylinder		16
Piston bore	mm	170
Piston stroke	mm	220
Total piston displacement	liter	79.9
Flywheel	SAE	21 inch
Flywheel housing	SAE	No.00
Fuel injection pump		Original PS
Governer type		Hydraulic & Electric
Capacity of starting motor	pc-kW	2-7.5
Recommended battery size	AH	400
Lub. oil capacity (Oil pan)	liter	290
Fresh water capacity (Engine)	liter	280
Dimensions (L x W x H)	mm	2946 x 1525 x 2029
Dry weight	kg	7,910



- \*4 stroke cycle, Water cooled, Diesel engine. Direct injection, Turbocharged with intercooler
- \*Fuel oil : Diesel fuel oil (ISO 8217 DMX)
- \*Starting system : Electric motor (DC24V earth float type)
- \*Lubricating system : Forced lubrication by engine gear pump
- \*Lubricating oil : API service grade CF class